

# CONTENT

- 02 • Introduction

---

- 01 • Closed Spelter Sockets<sup>1</sup>

---

- 01 • Open Spelter Sockets

---

- 02 • US Type Aluminium Hourglass Sleeves

---

- 03 • DIN 3093 Aluminium ferrules

---

- 04 • Lock Nut Left & Right

---

- 04 • Casting Nut

---

- 04 • Wire Rope Type Puller

---

- 05 • Wire Rope Grip

---

- 05 • Hand Winch (Wire Rope Type)

---

- 06 • Hand winch (Belt type)

---

- 06 • Corner protector for lifting sling

---

- 07 • Corner protector for steel wire rope

---

- 07 • Loader tines

---

- 07 • Spiral Anchor

---

- 08 • Ground Anchor

# COMPANY

**Thinkwell**

Thinkwell Hardware & Machinery CO.,Ltd is professional manufacturing facility providing Rigging Hardware ,Electric Line Pole power fittings, Trailer Hitches & Pulleys, Ornamental Wrought Iron, Container Fittings, Marine Hardware, Misc hardware and CNC parts .Our TK Brand is widely used in metallurgical machinery, electric power plants, coal operation , port operations, petrochemical industry, engineering, bridges, hydraulic engineering, shipping, cable-ways, overhead & fixed cranes along with portable mobile cranes etc.

Our International Sale Representatives work hand and hand with our inside sale representatives providing customer satisfaction through on-time manufacturing & delivery schedules, proficient documentation for hassle free service and handle questions with solutions for technical issues.

Thinkwell is a fully rounded service manufacture.

## Introduction

Thinkwell is a fully rounded service manufacture.

The factory covers an area of 10,000 square meters and employs over 250 full-time staff . An Engineering department, Design department, Technical department with 15 Technicians and a QC/QA department overseeing all operations. Two forging workshops and a mold workshop.

Our basic equipment includes: 1000T/630T/400T/300T/160T forging machines, air hammers, heating furnace, rolling machines, tapping machines, blasting machines and so on. Our factory has joint venture relationships with the heat treatment factory ,milling factory and galvanizing plant. Through our QC program end users can enjoy safe, reliable and the highest quality TK Brand products they expect.

Thinkwell' s reputation is recognized through worldwide buyers for over 16+ years.

# Production Equipments



Stamping Machine



CNC



Shot Blasting Machine



Forging Press



Cutting Machine



Hardness Machine



Forging Press



Tensile Testing Machine

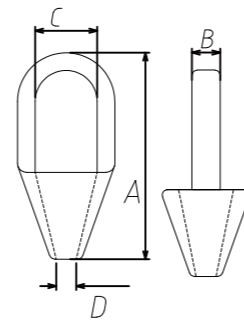


Drilling Machine

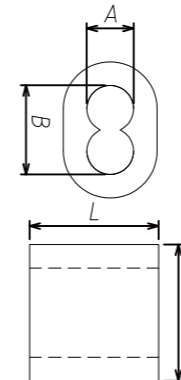
# Miscellaneous Hardware

## 1. Closed Spelter Sockets

Part No.	Rope Diameter Size (mm)	Weight (kg)	Dimensions (mm)			
			A	B	C	D
TKO 001	6	0.23	114.30	12.70	22.35	9.65
TKO 002	8-9	0.34	123.85	17.53	24.64	12.70
TKO 003	11-12	0.68	138.18	22.35	29.64	14.22
TKO 004	14-16	1.13	160.27	25.40	35.81	17.53
TKO 005	19	1.92	192.02	31.75	42.16	20.57
TKO 006	22	3.28	222.25	37.10	47.75	23.88
TKO 007	25	4.76	250.95	44.45	58.42	28.70
TKO 008	28	6.46	279.40	50.80	65.02	31.75
TKO 009	31.5-35	8.95	307.85	57.15	71.37	38.10
TKO 010	38	13.24	354.08	63.50	81.03	41.40
TKO 011	42	16.32	384.30	69.85	82.55	44.45
TKO 012	45-47.5	25.96	438.15	78.20	95.25	50.80
TKO 013	50-53	35.83	495.30	82.55	111.25	57.15
TKO 014	57-60	47.62	536.70	92.20	127.00	63.50
TKO 015	63-66	63.50	596.90	101.60	139.70	73.15
TKO 016	70-73	99.79	644.65	123.95	158.75	79.25
TKO 017	76-80	125.00	685.80	133.35	171.45	85.85
TKO 018	82-85	142.00	742.95	146.05	184.15	91.95
TKO 019	89-92	181.00	787.40	158.75	196.85	98.55
TKO 020	95-100	246.00	844.55	177.80	215.90	107.95



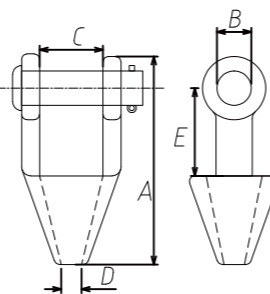
## 3. US Type Aluminium Hourglass Sleeves



Part No.	Size(mm)	Weight (kg/1000pcs)	Dimensions (mm)			
			A	B	D	L
TKO 041	1.19	0.276	1.59	3.18	5.2	9.5
TKO 042	1.58	0.433	1.98	3.97	6.4	9.5
TKO 043	1.98	0.645	2.38	4.76	7.9	9.5
TKO 044	2.38	1.45	3.18	6.35	10.3	12.7
TKO 045	3.18	2.7	3.97	7.94	12.7	15.8
TKO 046	3.97	3.67	4.76	9.53	14.3	17.4
TKO 047	4.76	7.18	5.56	11.11	16.7	25.1
TKO 048	5.56	10	6.35	12.70	19.0	26.9
TKO 049	6.35	11.76	7.14	14.29	20.6	28.5
TKO 050	7.14	13.62	7.94	15.88	22.2	30.1
TKO 051	7.94	20.94	9.53	19.05	26.2	31.7
TKO 052	9.53	28.18	11.11	22.23	29.4	36.5
TKO 053	11.11	52	12.70	25.40	36.5	42.8
TKO 054	12.70	80.15	14.29	28.58	41.3	50.8
TKO 055	14.29	99.88	15.88	31.75	44.5	53.9
TKO 056	15.88	139.78	17.64	34.93	49.2	63.5

## 2. Open Spelter Sockets

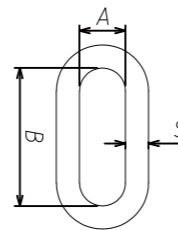
Part No.	Rope Diameter (mm)	Weight(kg)	Dimensions (mm)				
			A	B	C	D	E
TKO 021	6	0.50	115.82	17.53	23.11	9.35	39.62
TKO 022	8-9	0.59	122.94	20.57	20.57	12.70	44.45
TKO 023	11-12	1.02	141.22	25.40	25.40	14.22	50.80
TKO 024	14-16	1.63	171.45	30.23	21.75	17.53	63.50
TKO 025	19	2.64	201.68	35.05	38.10	20.57	76.20
TKO 026	22	4.38	234.95	41.40	44.45	23.88	88.80
TKO 027	25	7.03	268.22	50.80	50.80	28.70	101.60
TKO 028	28	9.75	299.97	57.15	57.15	31.75	117.35
TKO 029	31.5-35	14.10	335.03	63.50	63.50	38.10	127.00
TKO 030	38	21.40	384.05	69.85	76.20	41.40	152.40
TKO 031	42	24.90	412.75	76.20	76.20	44.45	165.10
TKO 032	45-47.5	37.20	463.55	88.90	88.90	50.80	177.80
TKO 033	50-53	59.00	546.10	95.25	101.60	57.15	228.60
TKO 034	57-60	76.00	596.90	107.95	114.30	63.50	254.00
TKO 035	63-66	114.00	647.70	120.65	127.00	73.15	273.05
TKO 036	70-73	143.00	692.15	127.00	133.35	97.25	279.40
TKO 037	76-80	172.00	736.60	133.35	146.05	85.85	285.75
TKO 038	82-85	197.00	784.35	139.70	158.75	91.95	298.45
TKO 039	89-92	255.00	844.55	152.40	171.45	98.55	317.50
TKO 040	95-100	355.00	920.75	177.80	190.50	107.95	342.50



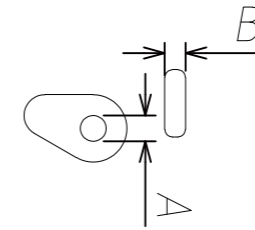
# Miscellaneous Hardware

## 4. DIN 3093 Aluminium ferrules

Part No.	Size(mm)	Weight (kg/1000pcs)	Dimensions(mm)			
			A	B	S	L
TKO 057	1	0.098	1.2	2.4	0.65	5
TKO 058	1.5	0.176	1.7	3.4	0.75	6
TKO 059	2	0.285	2.2	4.4	0.85	7
TKO 060	2.5	0.439	2.7	5.4	1.05	9
TKO 061	3	0.907	3.3	6.6	1.25	11
TKO 062	3.5	1.18	3.8	7.6	1.50	13
TKO 063	4	1.63	4.4	8.8	1.70	14
TKO 064	4.5	2.39	4.9	9.8	1.90	16
TKO 065	5	3.62	5.5	11.0	2.10	18
TKO 066	6	5.87	6.6	13.2	2.50	21
TKO 067	6.5	7.18	7.2	14.4	2.70	23
TKO 068	7	9.83	7.8	15.6	2.90	25
TKO 069	8	12.96	8.8	17.6	3.30	26
TKO 070	9	18.94	9.9	19.8	3.70	32
TKO 071	10	24.09	10.9	21.8	4.10	35
TKO 072	11	35.35	12.1	24.2	4.50	39
TKO 073	12	44.18	13.2	26.4	4.90	42
TKO 074	13	59.86	14.2	28.4	5.40	46
TKO 075	14	73.5	15.3	30.6	5.80	49
TKO 076	16	111	17.5	35.0	6.70	56
TKO 077	18	156	19.6	39.2	7.60	63
TKO 078	20	217	21.7	43.4	8.40	70
TKO 079	22	292	24.3	48.6	9.20	77
TKO 080	24	376	26.4	52.8	10.00	84
TKO 081	26	481	26.5	57.0	10.90	91
TKO 082	28	603	31.0	62.0	11.70	98
TKO 083	30	739	33.1	66.2	12.50	105
TKO 084	32	897	35.2	70.4	13.40	112
TKO 085	34	1077	37.8	75.6	14.20	119
TKO 086	36	1275	39.8	79.6	15.00	126
TKO 087	38	1503	41.9	83.8	15.80	133
TKO 088	40	1734	44.0	88.0	16.60	140
TKO 089	42	2024	46.2	92.4	17.50	147
TKO 090	44	2314	48.4	96.8	18.30	154
TKO 091	46	2662	50.6	101.2	19.20	161
TKO 092	48	3010	52.8	105.6	20.00	166
TKO 093	50	3412	55.0	110.0	20.80	175
TKO 094	52	3813	57.2	114.4	21.60	182
TKO 095	54	4293	59.4	118.8	22.50	189
TKO 096	56	4772	61.6	123.2	23.30	196
TKO 097	58	5326	63.8	127.6	24.20	203
TKO 098	60	5880	66.0	132.0	25.00	210

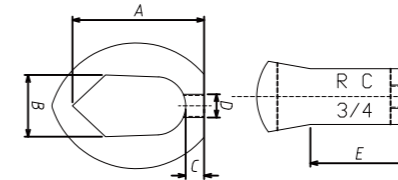


## 5. Lock Nut Left & Right



Part No.	Size (mm)	Weight (kg)	Dimensions (mm)	
			A	B
TKO 099	7/8"	0.026	18.2	6.32

## 6. Casting Nut



Part No.	Size (mm)	Weight (kg)	Dimensions (mm)				
			A	B	C	D	E
TKO 100	10	0.12	40.13	20.62	10.16	10	28.58



## 7. Wire Rope Type Puller

Part No.	Size of Wire (mm)	Capacity (kg)	Max Length (mm)	Min Length (mm)	Weight (kg)
TKO 101	4.5×2300	1000	1210	410	3.2
TKO 102	5×2300	1500	1400	480	4.2
TKO 103	5.5×2300	2000	1400	480	4.3
TKO 104	5×3200	1000(single wire)	3300	480	4.1
TKO 105	5×3200	1500(double wire)	3300	480	4.1
TKO 106	6×2400	3000	1400	480	4.9

# Miscellaneous Hardware

## 8. Wire Rope Grip



Part No.	W.L.L(lbs)	Wire Dia.Ranger (in.)	Weight (lbs.)	Handle Eye (in.)	Gauge
TKO 107	5000	0.18-0.6	3.7	1-1/4"-2"	Min 6 awg-Max 4/0 awg
TKO 108	10000	0.3-0.8	7	1-3/8"-2-1/4"	Min 1 awg-Max 450 mcm
TKO 109	12000	0.7-1.25	8.3	1-3/8"-2-3/8"	Min 397 mcm-1130mcm

## 9. Hand Winch (Wire Rope Type)

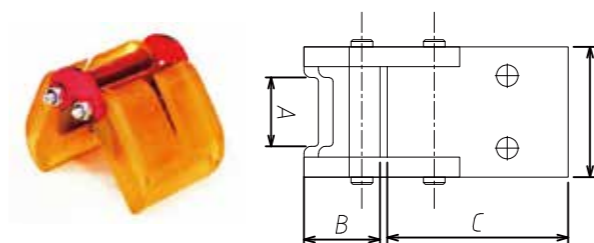


Part No.	W.L.L (kg)	B.S. (kg)	Wire Rope Dia.*Length	Gear Ratio	Weight (kg)
TKO 110	270	408	4.2mm*10m	3.2:1	2.625
TKO 111	362	544	4.5mm*10m	3.2:1	2.625
TKO 112	450	680	4.5mm*10m	4.1:1	3.775
TKO 113	540	810	4.8mm*10m	4.1:1	3.775
TKO 114	635	950	4.8mm*10m	4.0:1	5.12
TKO 115	720	1080	5mm*10m	4.0:1	5.12
TKO 116	800	1200	5mm*10m	4.0:1/8.0:1	5.7
TKO 117	900	1350	5mm*10m	4.0:1/8.0:1	5.6
TKO 118	1100	1650	5.6mm*10m	4.0:1/8.0:1	5.6

## 10. Hand Winch(Belt type)



Part No.	WLL. (kg)	B.S. (kg)	Belt Width*Length	Gear Ratio	Weight (kg)
TKO 119	250	375	50mm*7m	3.2:1	2.135
TKO 120	350	525	50mm*7m	3.2:1	2.135
TKO 121	450	675	50mm*10m	4.1:1	3.14
TKO 122	550	825	50mm*10m	4.1:1	3.14
TKO 123	600	900	50mm*10m	4.0:1	3.84
TKO 124	700	1050	50mm*10m	4.0:1	3.84
TKO 125	800	1200	50mm*10m	4.0:1/8.0:1	5.15
TKO 126	900	1350	50mm*10m	4.0:1/8.0:1	5.35
TKO 127	1100	1650	50mm*10m	4.0:1/8.0:1	5.35

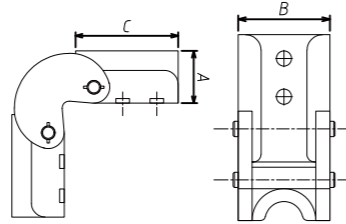


## 11. Corner protector for lifting sling

Part No.	Sling Width (mm)	Work load(T0)	Weight(kg)	Dimensions(mm)		
				A	B	C
TKO 128	40	1	0.51	50	30	60
TKO 129	50	2	0.7	60	33	65
TKO 130	60	3	1.02	70	38	70
TKO 131	70	5	1.28	90	40	75
TKO 132	90	8	1.75	100	46	90
TKO 133	100	10	2.4	110	49	100
TKO 134	115	12	3.2	125	53	110
TKO 135	140	15	4.9	150	63	130
TKO 136	170	20	6.7	180	66	140
TKO 137	170	30	9.3	180	77	160
TKO 138	170	40	10.4	180	80	170

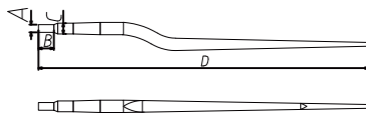
# Other Hardware

## 12. Corner protector for steel wire rope



Part No.	Sling Width (mm)	Work load(T0)	Weight(kg)	Dimensions(mm)		
				A	B	C
TKO140	40	1	0.51	50	30	60
TKO141	50	2	0.7	60	33	65
TKO142	60	3	1.02	70	38	70
TKO143	70	5	1.28	90	40	75
TKO144	90	8	1.75	100	46	90
TKO145	100	10	2.4	110	49	100
TKO146	115	12	3.2	125	53	110
TKO147	140	15	4.9	150	63	130
TKO148	170	20	6.7	180	66	140
TKO149	170	30	9.3	180	77	160
TKO150	170	40	10.4	180	80	170

## 13. Loader tines



Part No.	Steel wire rope size(mm)	Weight(kg)	Dimensions(mm)			
			A	B	C	R
TKO151	≅10	1	23	36	55	nage
TKO152	10-20	1.96	28	50	70	10.5
TKO153	20-30	2.4	44	66	88	15.5
TKO154	30-40	4.94	52	85	90	20.5
TKO155	40-50	9.5	61	88	117	26
TKO156	50-60	12.7	69	98	117	31.5

## 14. Spiral Anchor



Part No.	Length ( inch )	Working Load Limit (lbs)	Weight ( kg/pc)	Dimensions (mm)			
				A	B	D1	D2
TKO157	6	275	0.58	203	22	10	8
TKO158	8	275	0.73	254	22	10	8
TKO159	10	275	0.96	406	22	10	8



## 15. Ground Anchor

Part NO.	Size	Dia (mm)	Thickness (mm)	Weight (kg)
TKO 160	5/8"X4"X30"	16	4	1.766
TKO 161	5/8"X6"X30"	16	4	2.165
TKO 162	5/8"X6"X36"	16	4	2.4055
TKO 163	3/4"X6"X30"	18	4	2.547
TKO 164	3/4"X6"X36"	18	4	2.8515
TKO 165	3/4"X6"X48"	18	4	3.461
TKO 166	3/4"X8"X36"	18	4	3.142
TKO 167	3/4"X8"X48"	18	4	3.7513
TKO 168	3/4"X8"X54"	18	4	4.055
TKO 169	3/4"X8"X60"	18	4	4.361
TKO 170	1/2"X3"X48"	13	4	1.583